

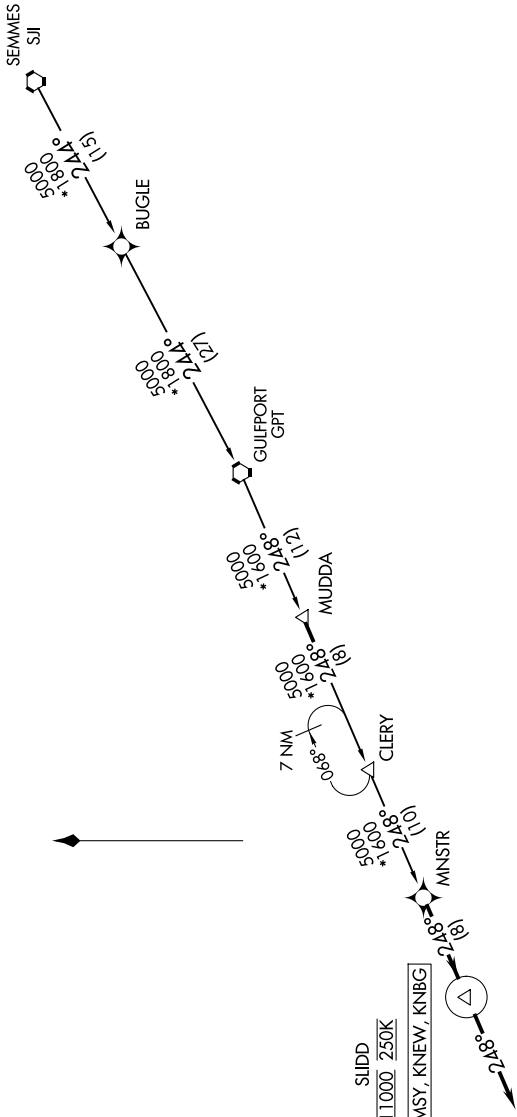
MNSTR ONE ARRIVAL (RNAV)

NEW ORLEANS, LOUISIANA

SC-4, 12 JUN 2025 to 10 JUL 2025

NEW ORLEANS APP CON
 125.5 350.35 (WEST)
 133.15 290.3 (EAST)
 KNBG ATIS
 279.55
 MSY D-ATIS
 127.55
 NEW ATIS
 124.9

RNAV 1 - DME/DME/IRU or GPS.
 RADAR required.



LAKEFRONT
 LOUIS ARMSTRONG
 NEW ORLEANS INTL
 NEW ORLEANS NAS JRB
 (ALVIN CALLENDER FLD)

ARRIVAL ROUTE DESCRIPTION
 GULFPORT TRANSITION (GPT.MNSTR1)
 SEMMES TRANSITION (SJI.MNSTR1)

LANDING ALL AIRPORTS: From MNSTR on track 248° to cross SLIDD at 11000 and at 250K, then on track 248°. Expect RADAR vectors to final approach course.

NOTE: Chart not to scale.

MNSTR ONE ARRIVAL (RNAV)

NEW ORLEANS, LOUISIANA

SC-4, 12 JUN 2025 to 10 JUL 2025