

SCHOLES INTL AT GALVESTON (GLS)
GALVESTON, TEXAS

INDIE EIGHT DEPARTURE (RNAV)

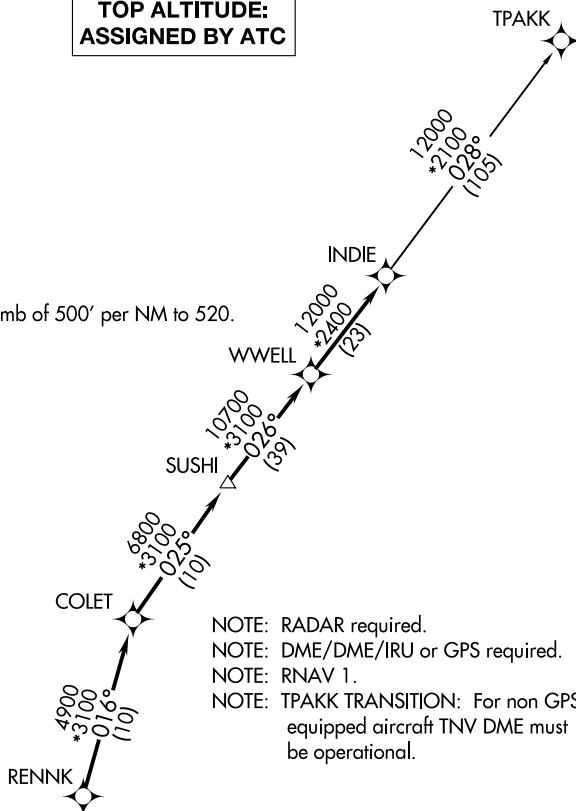
ASOS
123.95
CLNC DEL
135.35 (when twr closed)
GND CON
118.625
GALVESTON TOWER★
120.575 (CTAF)
HOUSTON DEP CON
134.45 284.0

**TOP ALTITUDE:
ASSIGNED BY ATC**

TAKEOFF MINIMUMS

Rwys 14, 18, 32, 36:

Standard with minimum climb of 500' per NM to 520.



NOTE: RADAR required.
NOTE: DME/DME/IRU or GPS required.
NOTE: RNAV 1.
NOTE: TPAKK TRANSITION: For non GPS
equipped aircraft TNV DME must
be operational.

DEPARTURE ROUTE DESCRIPTION

TAKEOFF RUNWAY 14: Climb on heading 138° to 520 for
RADAR vectors to RENNK, thence . . .

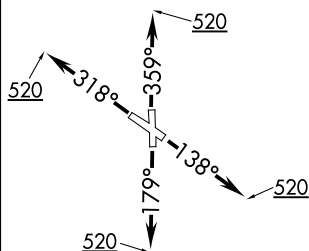
TAKEOFF RUNWAY 18: Climb on heading 179° to 520 for
RADAR vectors to RENNK, thence . . .

TAKEOFF RUNWAY 32: Climb on heading 318° to 520 for
RADAR vectors to RENNK, thence . . .

TAKEOFF RUNWAY 36: Climb on heading 359° to 520 for
RADAR vectors to RENNK, thence

. . . on track 016° to COLET, then on track 025° to SUSHI, then on track 026° to WWELL, then on track 026° to INDIE, then on (transition). Maintain ATC assigned altitude. Expect filed altitude 10 minutes after departure.

TPAKK TRANSITION (INDIE8.TPAKK)



NOTE: Chart not to scale.

INDIE EIGHT DEPARTURE (RNAV)
(INDIE8.INDIE) 07OCT21

GALVESTON, TEXAS
SCHOLLS INTL AT GALVESTON (GLS)

SC-5, 12 JUN 2025 to 10 JUL 2025