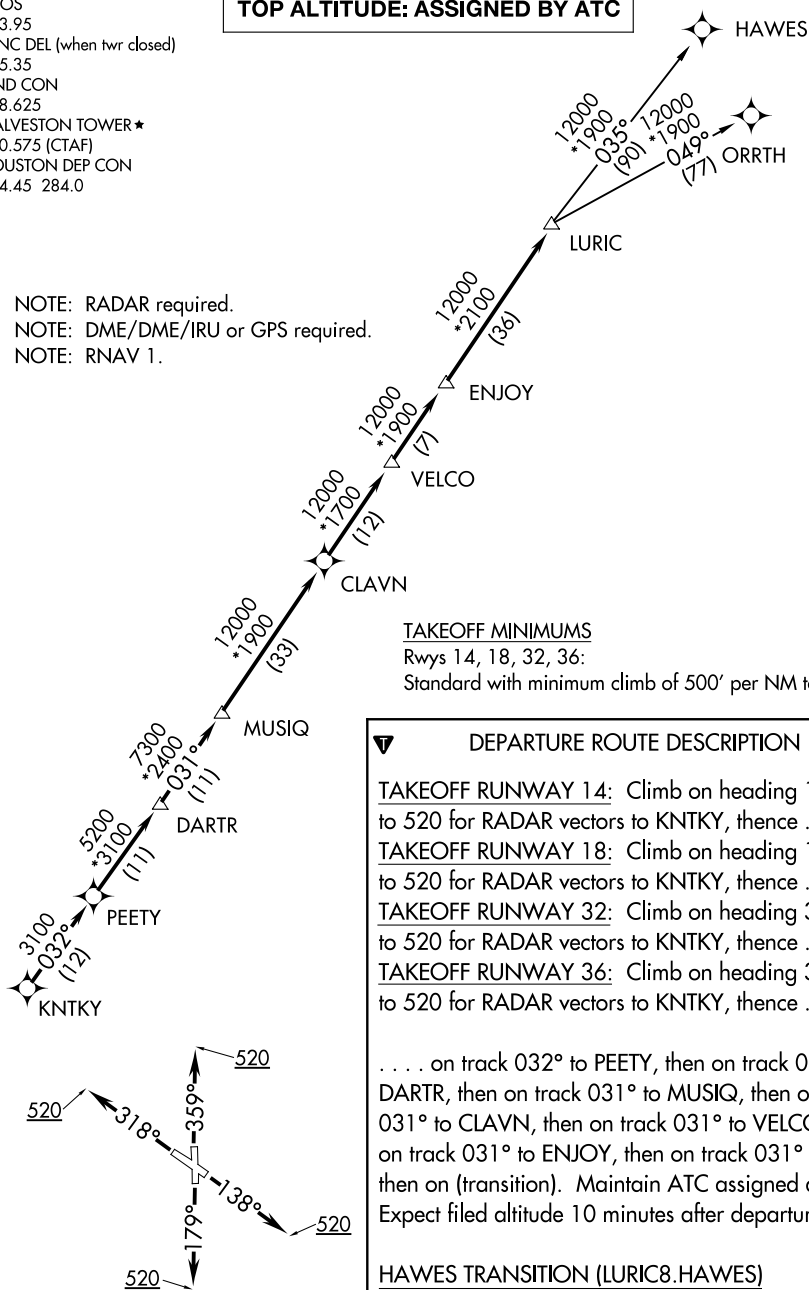


SCHOLES INTL AT GALVESTON (GLS)
GALVESTON, TEXAS

LURIC EIGHT DEPARTURE (RNAV)

ASOS
123.95
CLNC DEL (when twr closed)
135.35
GND CON
118.625
GALVESTON TOWER ★
120.575 (CTAF)
HOUSTON DEP CON
134.45 284.0

NOTE: RADAR required.
NOTE: DME/DME/IRU or GPS required.
NOTE: RNAV 1.



Standard with minimum climb of 500' per NM to 520.

DEPARTURE ROUTE DESCRIPTION

to 520 for RADAR vectors to KNTKY, thence

... on track 032° to PEETY, then on track 032° to DARTR, then on track 031° to MUSIQ, then on track 031° to CLAVN, then on track 031° to VELCO, then on track 031° to ENJOY, then on track 031° to LURIC, then on (transition). Maintain ATC assigned altitude. Expect filed altitude 10 minutes after departure.

ORRTH TRANSITION (LURIC8.ORRTH)

NOTE: Chart not to scale.

LURIC EIGHT DEPARTURE (RNAV)
(LURIC8.LURIC) 07OCT21

GALVESTON, TEXAS
SCHOLES INTL AT GALVESTON (GLS)

SC-5, 12 JUN 2025 to 10 JUL 2025

SC-5, 12 JUN 2025 to 10 JUL 2025