

AL-606 (FAA)

## KRAKN ONE ARRIVAL (RNAV) Arrival Routes

## KEY WEST, FLORIDA

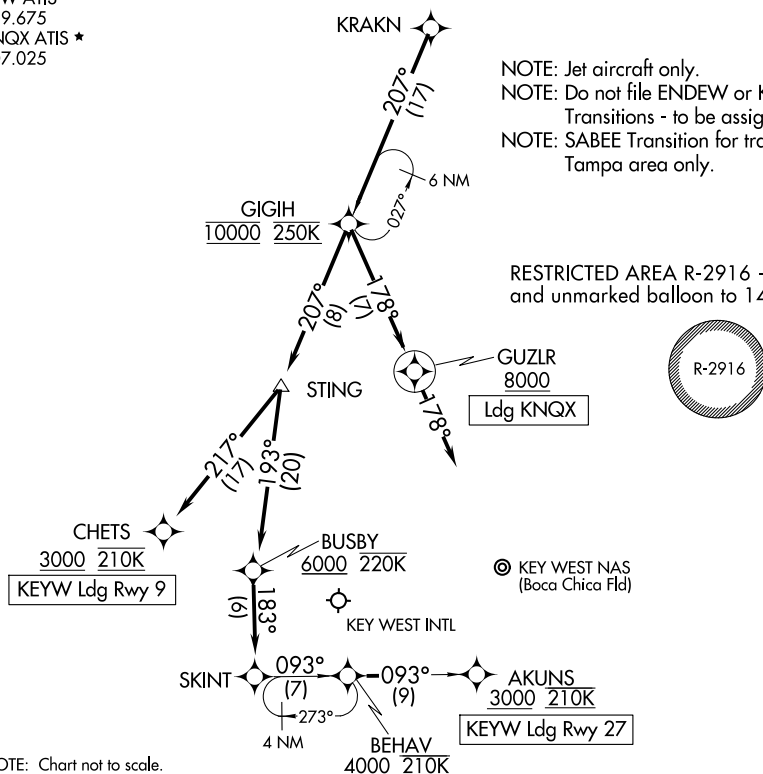
NAVY KEY WEST APP CON ★  
124.025 313.7  
EYW ATIS  
119.675  
KNQX ATIS ★  
307.025

RNAV 1 - DME/DME/IRU or GPS.

RADAR required.

NOTE: Jet aircraft only.  
NOTE: Do not file ENDEW or KARTR  
Transitions - to be assigned by ATC.  
NOTE: SABEE Transition for traffic departing  
Tampa area only.

RESTRICTED AREA R-2916 - Caution cable  
and unmarked balloon to 14000 MSL.



NOTE: Chart not to scale.

## ARRIVAL ROUTE DESCRIPTION

KEYW: From KRAKN on track 207° to cross GIGIH at 10000 and at 250K, then on track 207° to STING.

LANDING KEYW RUNWAY 9: From STING on track 217° to cross CHETS at or above 3000 and at 210K. Expect RNAV (GPS) RWY 9 approach.

**LANDING KEYW RUNWAY 27:** From STING on track 193° to cross BUSBY at or above 6000 and at or below 220K, then on track 183° to SKINT, then on track 093° to cross BEHAV at or above 4000 and at 210K, then on track 093° to cross AKUNS at or above 3000 and at 210K. Expect RNAV (GPS) RWY 27 approach.

**LANDING KNQX:** From KRAKN on track 207° to cross GIGIH at 10000 and at 250 K, then on track 178° to cross GUZLR at or above 8000, then on track 178°. Expect RADAR vectors to final approach course.

# KRAKN ONE ARRIVAL (RNAV) Arrival Routes

KEY WEST, FLORIDA

SE-3, 12 JUN 2025 to 10 JUL 2025

SE-3, 12 JUN 2025 to 10 JUL 2025