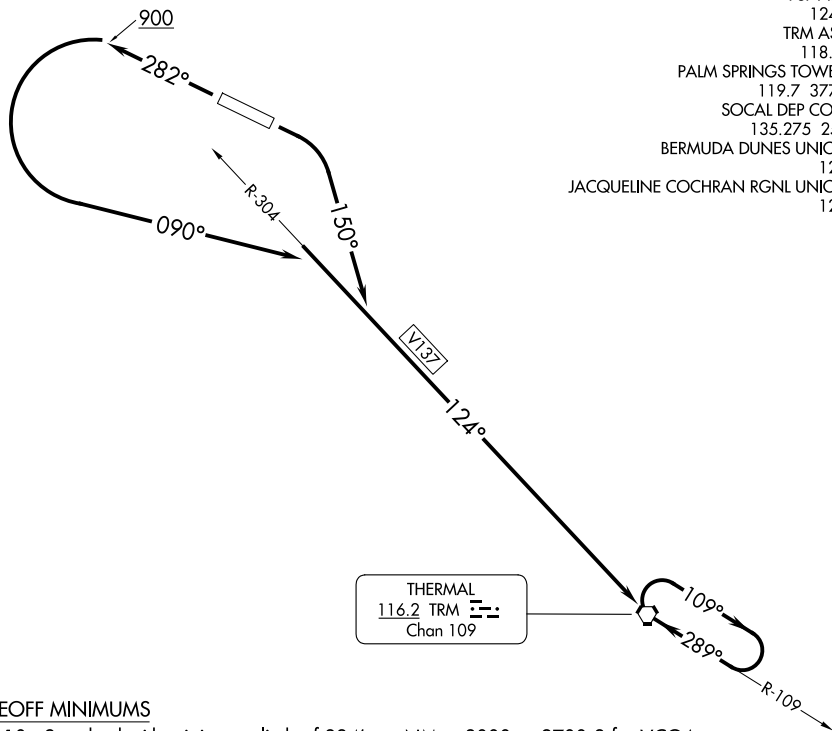


BERMUDA DUNES ONE DEPARTURE (OBSTACLE)



- PSP ASOS 124.65
- TRM ASOS 118.325
- PALM SPRINGS TOWER ★ 119.7 377.05
- SOCAL DEP CON ★ 135.275 251.1
- BERMUDA DUNES UNICOM 122.8
- JACQUELINE COCHRAN RGNL UNICOM 123.0

THERMAL
116.2 TRM
Chan 109

TAKEOFF MINIMUMS

- Rwy 10: Standard with minimum climb of 334' per NM to 3000 or 2700-3 for VCOA.
- Rwy 28: Standard with minimum climb of 490' per NM to 2300 or 2700-3 for VCOA.

NOTE: Chart not to scale.

DEPARTURE ROUTE DESCRIPTION

TAKEOFF RUNWAY 10: Climbing right turn heading 150° to intercept TRM R-304 to TRM VORTAC, thence . . . or, obtain ATC approval for VCOA when requesting IFR clearance; climb in visual conditions to cross Bermuda Dunes Airport at or above 2600, then on TRM R-304 to TRM VORTAC, thence . . .

TAKEOFF RUNWAY 28: Climb heading 282° to 900 then climbing left turn heading 090° to intercept TRM R-304 to TRM VORTAC, thence . . . or, obtain ATC approval for VCOA when requesting IFR clearance; climb in visual conditions to cross Bermuda Dunes Airport at or above 2600, then on TRM R-304 to TRM VORTAC, thence . . .

. . . continue climbing in TRM VORTAC holding pattern to cross TRM VORTAC at or above MEA/MCA for route of flight.

SW-3, 12 JUN 2025 to 10 JUL 2025

SW-3, 12 JUN 2025 to 10 JUL 2025