

WAAS CH 69204 W33A	APP CRS 336°	Rwy Idg 5950 TDZE 4316 Apt Elev 4317
--	------------------------	---

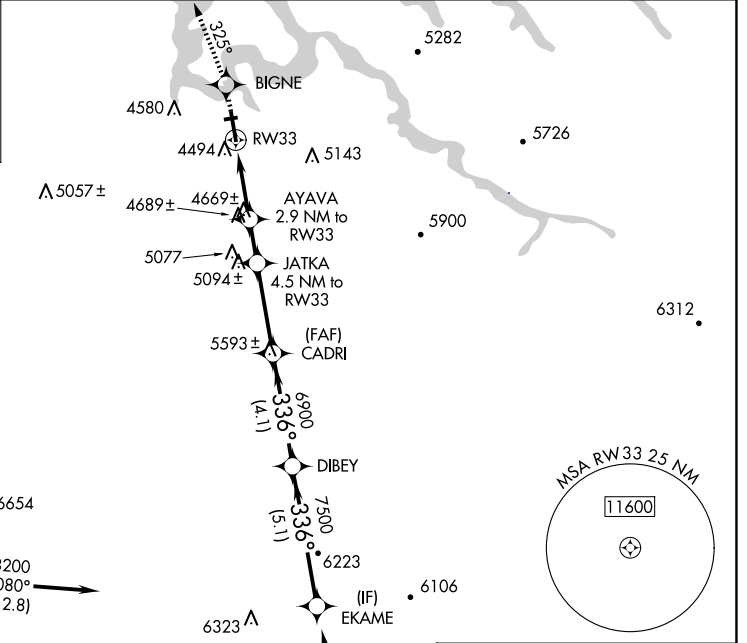
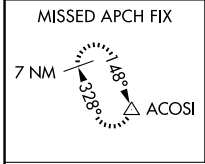
RNAV (GPS) RWY 33

PAGE MUNI (PGA)

▽ For uncompensated Baro-VNAV systems, LNAV/VNAV NA below -23°C (-9°F) or above 41°C (105°F).
DME/DME RNP-0.3 NA. Circling NA to Rwy 7-25.

MISSED APPROACH: Climb to 8500 direct BIGNE and via 325° track to ACOSI and hold, continue climb-in-hold to 8500.

ASOS 120.625	DENVER CENTER 127.55 256.875	UNICOM 122.8 (CTAF) 0
------------------------	--	--



SW-4, 12 JUN 2025 to 10 JUL 2025

SW-4, 12 JUN 2025 to 10 JUL 2025

Procedure NA for arrivals at CELAY via V208 southbound.

(IAF) KLIFF 8200 080° (12.8)

(IF) EKAME 6106

(IAF) CELAY 8200

ELEV 4317	D TDZE 4316
-----------	--------------------

8500	BIGNE	ACOSI	VGSI and RNAV glidepath not coincident (VGSI Angle 3.00/TCH 30).				EKAME	
↑	325° tr	△	JATKA	CADRI	DIBEY	8200		
*LNAV only.			AYAVA 2.9 NM to RW33	4.5 NM to RW33		Procedure Turn NA		
			*1.8 NM to RW33			GP 3.00° TCH 50		
			5280	5800	6900			
			1.8 NM	1.1 NM	1.6 NM	3.3 NM	4.1 NM	5.1 NM
CATEGORY	A	B	C	D				
LPV DA	4566-1			250 (300-1)				
LNAV/VNAV DA	4744-1½			428 (500-1½)				
LNAV MDA	4920-1	604 (700-1)		4920-1¾	604 (700-1¾)			
CIRCLING	4920-1	603 (700-1)		5080-2¼	763 (800-2¼)			
				5360-3	1043 (1100-3)			

