

RICHMOND INTL (RIC)(KRIC) P (ARNG) 6 E UTC-5(-4DT) N37°30.31' W77°19.18'
 168 B TPA—See Remarks LRA ARFF Index—See Remarks NOTAM FILE RIC MON
 Airport

WASHINGTON

H-10H, 12I, L-34E, 36H

IAP, AD

RWY 16-34: H9003X150 (ASPH-GRVD) S-125, D-238, 2S-175,
 2D-409, 2D/2D2-944 PCR 600 F/B/XT HIRL CL

RWY 16: MALSR. PAPI(P4L)—GA 3.0° TCH 71'. RVR-TMR

RWY 34: ALSF2. TDZL. PAPI(P4L)—GA 3.0° TCH 79'. RVR-TMR

RWY 02-20: H6607X150 (ASPH-GRVD) S-120, D-250, 2S-175,
 2D-480, 2D/2D2-1034 PCR 820 F/C/X/T HIRL

RWY 02: MALSR. PAPI(P4L)—GA 3.0° TCH 49'. Pole.

RWY 20: REIL. PAPI(P4L)—GA 3.0° TCH 49'. Tree.

RUNWAY DECLARED DISTANCE INFORMATION

RWY 02: TORA-6607 TODA-6607 ASDA-6607 LDA-6607

RWY 16: TORA-9003 TODA-9003 ASDA-9003 LDA-9003

RWY 20: TORA-6607 TODA-6607 ASDA-6607 LDA-6607

RWY 34: TORA-9003 TODA-9003 ASDA-9003 LDA-9003

SERVICE: S4 FUEL 100LL, JET A OX3, 4 LGT SS-SR. MILITARY—FUEL

A, A+(C804-226-7200, C804-337-7487) (NC-100LL) FLUID

PRESAIR LPOX LOX OIL O-148(Mil) SOAP

AIRPORT REMARKS: Attended continuously. Arpt sfc not mntd 0500-1100

Z+. Bird act invof all rwy and twys and invof arpt. 220' MSL crane

(marked and lgt'd) 5.4 NM south of arpt. Class I, ARFF Index C. ARFF

Index D/E avbl on req. No turbojet acft practice lds 0300-1200Z+. Cons const on arpt, be alert for freq rwy and twy

closures. Twy V btn Twy A and Twy R rstrd frm use by acft with wingspans greater than 99'. Due to the close proximity to

Rwy 02-20, Twy Uniform signage may be behind acft, once clear of Rwy 02-20. Due to opr constraints acft pushed back

for dep prohibited fm hldg on ACR ramps for more than 5 mins. ACR apron clsd to unsked acft weighing under 35000

lbs. No taxiing btn pushed back acft and the trml on the ACR ramp. ATC clnc rqr'd for pushback from hardstands C9, C10

and C12 onto Twy T. Non-RDO equipped vehicles crossing midfield Twys C, E and H and driving on Twy L. Hold line Rwy

20 east side lctd across Rwy 34 150' fm dep end. Hold line Rwy 20 west side lctd across Twy A and also serves as hold

line for Rwy 16, signage indicates both rwy. ATC clnc rqr'd for pushbacks from Gates A6, A8, A10, A12, A14, B5, B7,

B9, B11, B13 onto Twy A. No Edge lghts on N/S section of Twy V—Reflectors only. The following areas are not visible from

the twr: portions of the ACR apron, ANG acft prkg ramp. RIC has facility constraints that limits its ability to accommodate

diverted flts and strongly encourages acft ops to ctc arpt ops at 804-226-0001 for prior cdn of diverted flts, except in

the case of a declared in-flight emerg. TPA—1201(1033) single engine, lgt acft, 1701(1533) all others. Ldg fee. Flight

Notification Service (ADCUS) avbl.

AIRPORT MANAGER: (804) 226-3001

WEATHER DATA SOURCES: ASOS (804) 223-6573. WSP.

COMMUNICATIONS: ATIS 119.15 UNICOM 122.95

RCO 122.4 (LEESBURG RADIO)

® **POTOMAC APP/DEP CON** 126.4 (001°-185°) 126.75 (186°-360°) 118.2

TOWER 121.1 **GND CON** 121.9 **CLNC DEL** 127.55

AIRSPACE: CLASS C svc ctc APP CON.

RADIO AIDS TO NAVIGATION: NOTAM FILE RIC.

(H) (H) **VORTACW** 114.1 RIC Chan 88 N37°30.14' W77°19.22' at fld. 158/9W.

TAC AZM unusable:

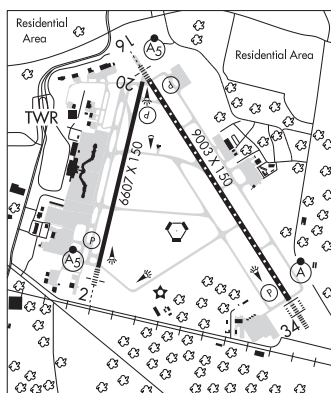
060°-075° byd 10 NM blo 1,700'

ILS 110.9 I-EZD Rwy 02. Class IT. Autopilot cpd apch NA blw 760' MSL.

ILS 110.7 I-RGJ Rwy 16. Class IA.

ILS 110.7 I-BNE Rwy 34. Class IIIE.

COMM/NAV/WEATHER REMARKS: For airfield info or arpt ops call 804-226-0001.



Cons const on arpt, be alert for freq rwy and twy

closures. Twy V btn Twy A and Twy R rstrd frm use by acft with wingspans greater than 99'. Due to the close proximity to

Rwy 02-20, Twy Uniform signage may be behind acft, once clear of Rwy 02-20. Due to opr constraints acft pushed back

for dep prohibited fm hldg on ACR ramps for more than 5 mins. ACR apron clsd to unsked acft weighing under 35000

lbs. No taxiing btn pushed back acft and the trml on the ACR ramp. ATC clnc rqr'd for pushback from hardstands C9, C10

and C12 onto Twy T. Non-RDO equipped vehicles crossing midfield Twys C, E and H and driving on Twy L. Hold line Rwy

20 east side lctd across Rwy 34 150' fm dep end. Hold line Rwy 20 west side lctd across Twy A and also serves as hold

line for Rwy 16, signage indicates both rwy. ATC clnc rqr'd for pushbacks from Gates A6, A8, A10, A12, A14, B5, B7,

B9, B11, B13 onto Twy A. No Edge lghts on N/S section of Twy V—Reflectors only. The following areas are not visible from

the twr: portions of the ACR apron, ANG acft prkg ramp. RIC has facility constraints that limits its ability to accommodate

diverted flts and strongly encourages acft ops to ctc arpt ops at 804-226-0001 for prior cdn of diverted flts, except in

the case of a declared in-flight emerg. TPA—1201(1033) single engine, lgt acft, 1701(1533) all others. Ldg fee. Flight

Notification Service (ADCUS) avbl.