

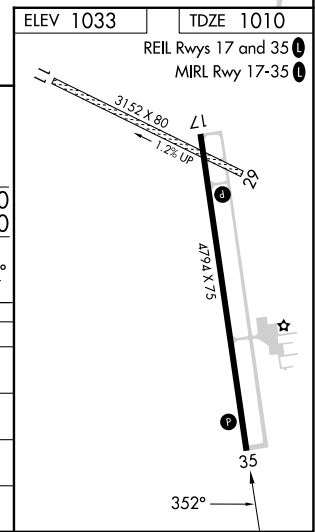
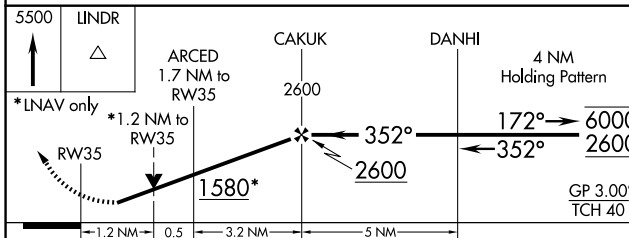
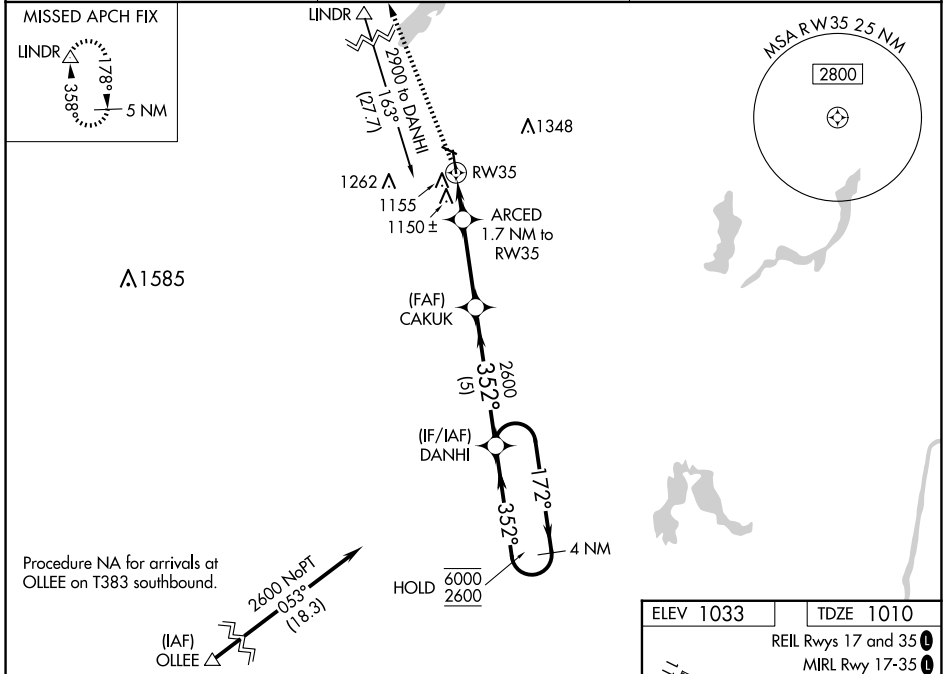
WAAS CH <b>90139</b> <b>W35A</b>	APP CRS <b>352°</b>	Rwy Idg TDZE Apt Elev	<b>4794</b> <b>1010</b> <b>1033</b>
--	------------------------	-----------------------------	---

# RNAV (GPS) RWY 35

MORA MUNI (JMR)

RNP APCH.	MISSED APPROACH: Climb to 5500 direct LINDR and hold, continue climb-in-hold to 5500.
<p>▼ Circling NA to Rwys 11 and 29. Circling Rwy 17 NA at night.</p> <p>▲ Rwy 35 helicopter visibility reduction below 3/4 SM NA.</p> <p>For uncompensated Baro-VNAV systems, LNAV/VNAV NA below -17°C or above 54°C.</p>	

AWOS-3 <b>123.925</b>	MINNEAPOLIS CENTER <b>121.05 235.775</b>	UNICOM <b>122.8 (CTAF) 0</b>
--------------------------	---	---------------------------------



CATEGORY	A	B	C	D
LPV DA		1269-1	259 (300-1)	
LNAV/VNAV DA		1316-1	306 (300-1)	
LNAV MDA	1420-1	410 (400-1)	1420-1 1/8	410 (400-1 1/8)
<b>C</b> CIRCLING	1480-1 447 (500-1)	1500-1 467 (500-1)	1700-2 667 (700-2)	1700-2 1/4 667 (700-2 1/4)

NC-1, 10 JUL 2025 to 07 AUG 2025

NC-1, 10 JUL 2025 to 07 AUG 2025