

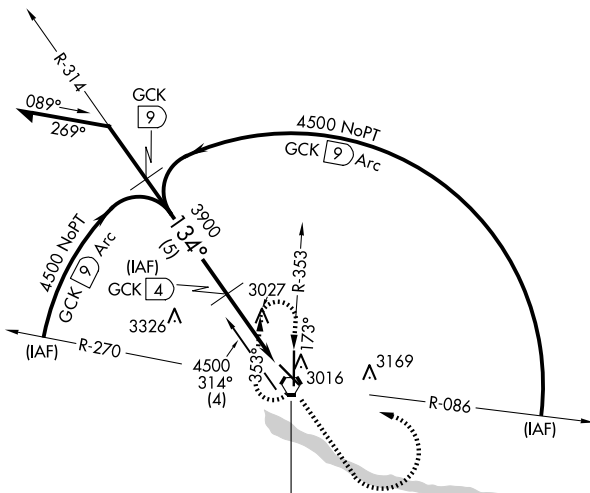
VORTAC GCK 113.3 Chan 80	APP CRS 134°	Rwy Idg TDZE Apt Elev 5700 2891 2891
--	------------------------	--

VOR/DME RWY 12

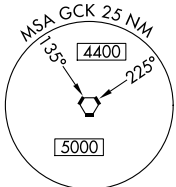
GARDEN CITY RGNL (GCK)

<p>ASOS 121.325</p>		<p>KANSAS CITY CENTER 125.2 285.425</p>		<p>GARDEN CITY TOWER * 118.15 (CTAF) 0 254.4</p>		<p>GND CON 119.0 254.4</p>		<p>UNICOM 122.95</p>	
---------------------------------------	--	--	--	---	--	---------------------------------------	--	---------------------------------	--

MISSED APPROACH: Climb to 4000 then climbing left turn to 4500 direct GCK VORTAC and hold.



GARDEN CITY
113.3 GCK
Chan 80

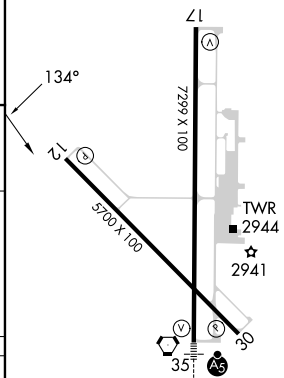
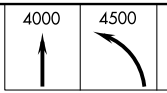
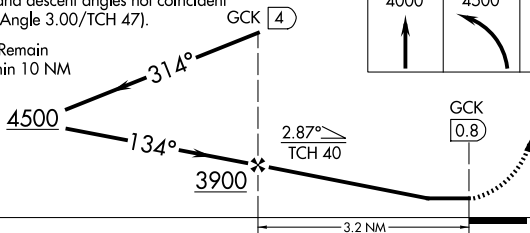


▲3930

ELEV 2891 TDZE 2891

VGSI and descent angles not coincident (VGSI Angle 3.00/TCH 47).

Remain within 10 NM



CATEGORY	A	B	C	D
S-12	3280-1	389 (400-1)		3280-1¼ 389 (400-1¼)
CIRCLING	3320-1 429 (500-1)	3360-1 469 (500-1)	3480-1½ 589 (600-1½)	3480-2 589 (600-2)

REIL Rwy 12, 17, and 30
MIRL Rwy 12-30
HIRL Rwy 17-35

NC-2, 10 JUL 2025 to 07 AUG 2025

NC-2, 10 JUL 2025 to 07 AUG 2025