

WAAS CH 65929 W01B	APP CRS 016°	Rwy Ldg 7302 TDZE 1321 Apt Elev 1333
--	------------------------	---

RNAV (GPS) RWY 1R

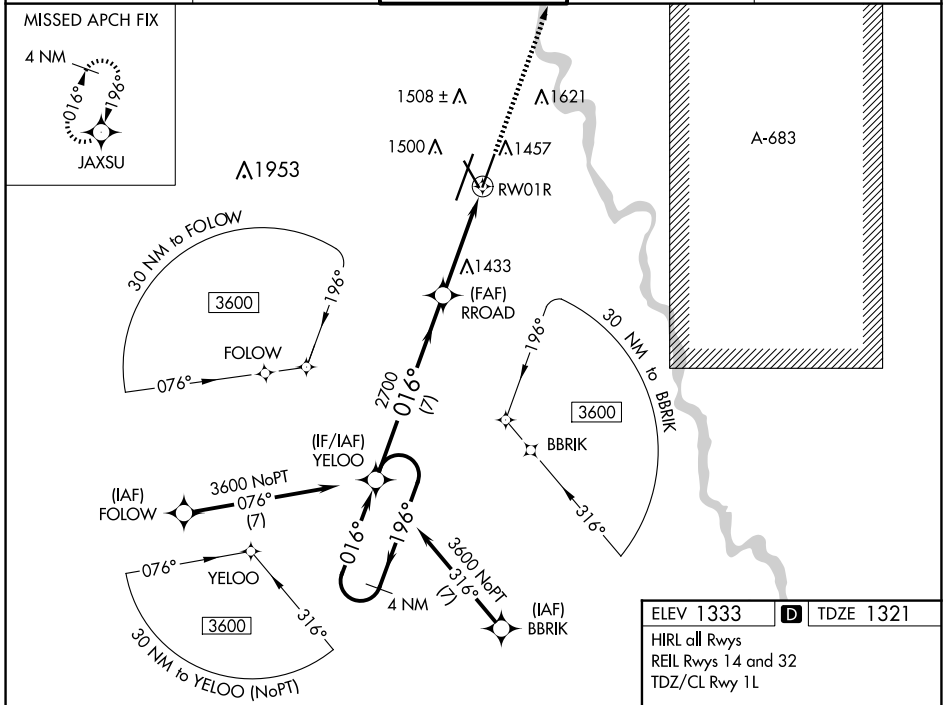
WICHITA DWIGHT D EISENHOWER NTL (ICT)

⚠ For uncompensated Baro-VNAV systems, LNAV/VNAV NA below -15°C (5°F) or above 54°C (130°F). For inoperative MALS, increase LPV Cat E visibility to 3/4, LNAV/VNAV Cat E visibility to 1 1/2 and LNAV Cat C, D and E visibility to 1 1/2. DME/DME RNP-0.3 NA. LNAV procedure NA during simultaneous operations. Simultaneous approach authorized with ILS or LOC RWY 1L and ILS RWY 1L (CAT II). Use of FD or AP providing RNAV track guidance required during simultaneous operations. # RVR 1800 authorized with use of FD or AP or HUD to DA.



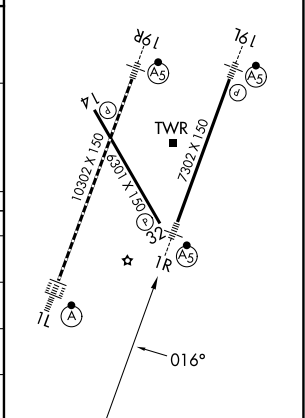
MALS
MISSED APPROACH:
Climb to 3600 direct
JAXSU and hold.

ATIS 125.15	WICHITA APP CON 126.7 353.5	WICHITA TOWER 118.2 257.8	GND CON 121.9 348.6	CLNC DEL 125.7
-----------------------	---------------------------------------	-------------------------------------	-------------------------------	--------------------------



ELEV 1333	D TDZE 1321
HIRL all Rwys	
REIL Rwys 14 and 32	
TDZ/CL Rwy 1L	

4 NM Holding Pattern	YELOO	RROAD	3600 JAXSU		
3600 ← 196°	016° →	2700	*1.1 NM to RW01R		
GP 3.00°			*LNAV only.		
TCH 54					
	7 NM	3.1 NM	1.1		
CATEGORY	A	B	C	D	E
LPV DA#		1521/24	200 (200-1/2)		
LNAV/VNAV DA		1660/32	339 (400-5/8)		
LNAV MDA	1740/24	419 (500-1/2)	1740/40	419 (500-3/4)	
C CIRCLING	1800-1	467 (500-1)	1980-1 3/4 647 (700-1 3/4)	1980-2 647 (700-2)	2000-2 1/4 667 (700-2 1/4)



NC-2, 10 JUL 2025 to 07 AUG 2025

NC-2, 10 JUL 2025 to 07 AUG 2025