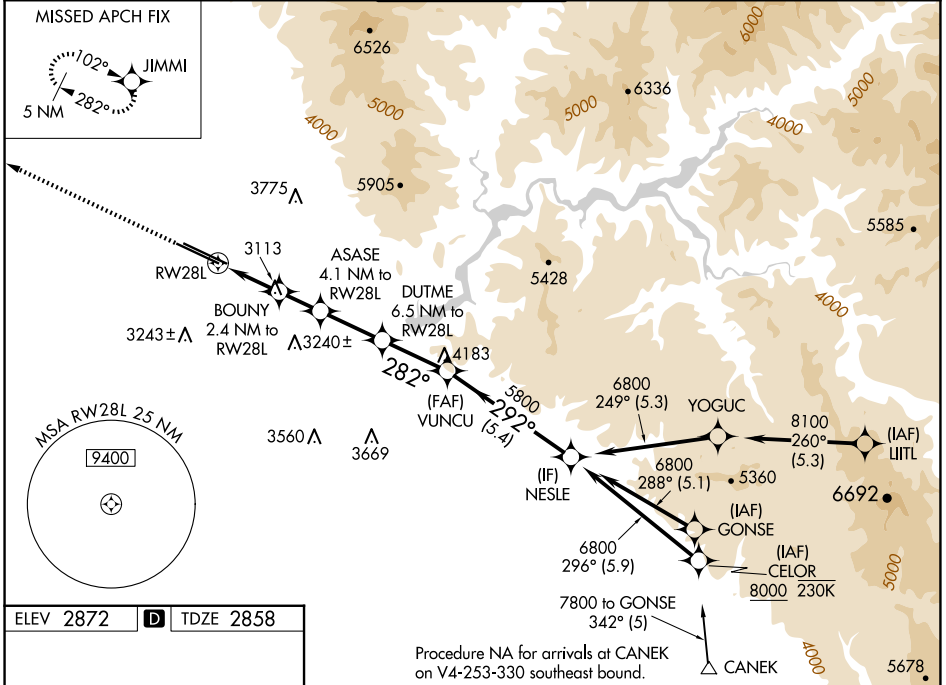


WAAS CH 7702 W28A	APP CRS 282°	Rwy Ldg TDZE Apt Elev	9763 2858 2872
---------------------------------------	------------------------	-----------------------------	---

RNAV (GPS) Y RWY 28L

BOISE AIR TRML/GOWEN FLD (BOI)

RNP APCH - GPS.		MISSED APPROACH: Climb to 6000 direct JIMMI and hold, continue climb-in-hold to 6000.		
Circling NA north of Rwy 10L-28R. For uncompensated Baro-VNAV systems, LNAV/VNAV NA below -14°C or above 54°C. For inop ALS, increase LPV all Cats visibility to RVR 4500, and LNAV/VNAV all Cats visibility to RVR 6000.				
D-ATIS 123.9 290.4	BIG SKY APP CON 119.6 269.4	BOISE TOWER 118.1 257.8	GND CON 121.7 348.6	CLNC DEL 125.9 323.2



ELEV 2872 **D** TDZE 2858

REIL Rwy 10L
TDZ/CL Rws 10R and 28L
HIRL Rws 10L-28R and 10R-28L

Procedure NA for arrivals at CANEK on V4-253-330 southeast bound.

6000	JIMMI	VGSi and RNAV glidepath not coincident (VGSi Angle 3.00/TCH 50).		NESLE
		BOUNY 2.4 NM to RWY 28L	DUTME 6.5 NM to RWY 28L	VUNCU 5800
		ASASE 4.1 NM to RWY 28L		
		1.4 NM to RWY 28L		
		3680	4200	4980
		1.4 NM	1 NM	1.6 NM
				2.5 NM
				2.6 NM
				5.4 NM
				6800
				5800
				GP 3.00° TCH 50
CATEGORY	A	B	C	D
LPV DA		3160/24	302 (300-½)	
LNAV/VNAV DA		3267/40	409 (400-¾)	
LNAV MDA	3380/24	522 (600-½)	3380/55	522 (600-1)
C CIRCLING	3440-1	568 (600-1)	3640-2¼ 768 (800-2¼)	3820-3 948 (1000-3)

NW-1, 10 JUL 2025 to 07 AUG 2025

NW-1, 10 JUL 2025 to 07 AUG 2025