

# KARR SEVEN DEPARTURE (RNAV)

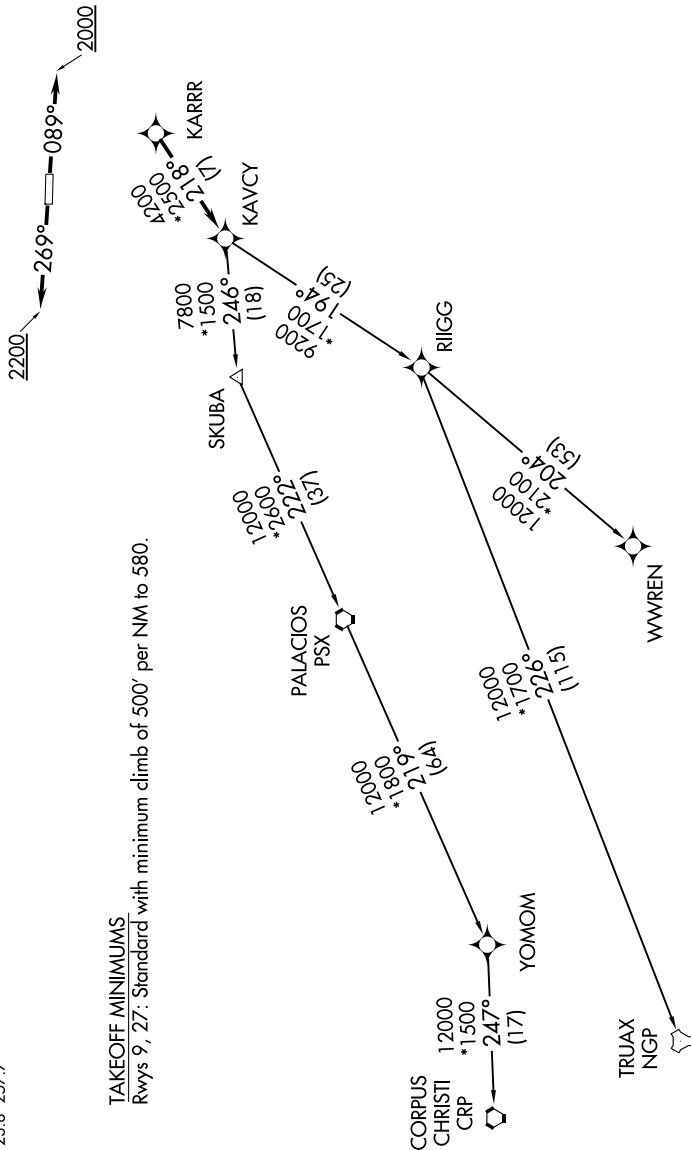
**TOP ALTITUDE:  
ASSIGNED BY ATC**

RNAV-1 DME/DME/IRU or GPS.  
RADAR required.

AWOS-3  
123.625  
CTAF  
123.0  
CINC DEL  
120.8  
HOUSTON DEP CON  
123.8 257.7

**TAKEOFF MINIMUMS**

Rwys 9, 27: Standard with minimum climb of 500' per NM to 580.



(NARRATIVE ON FOLLOWING PAGE)

NOTE: Chart not to scale.