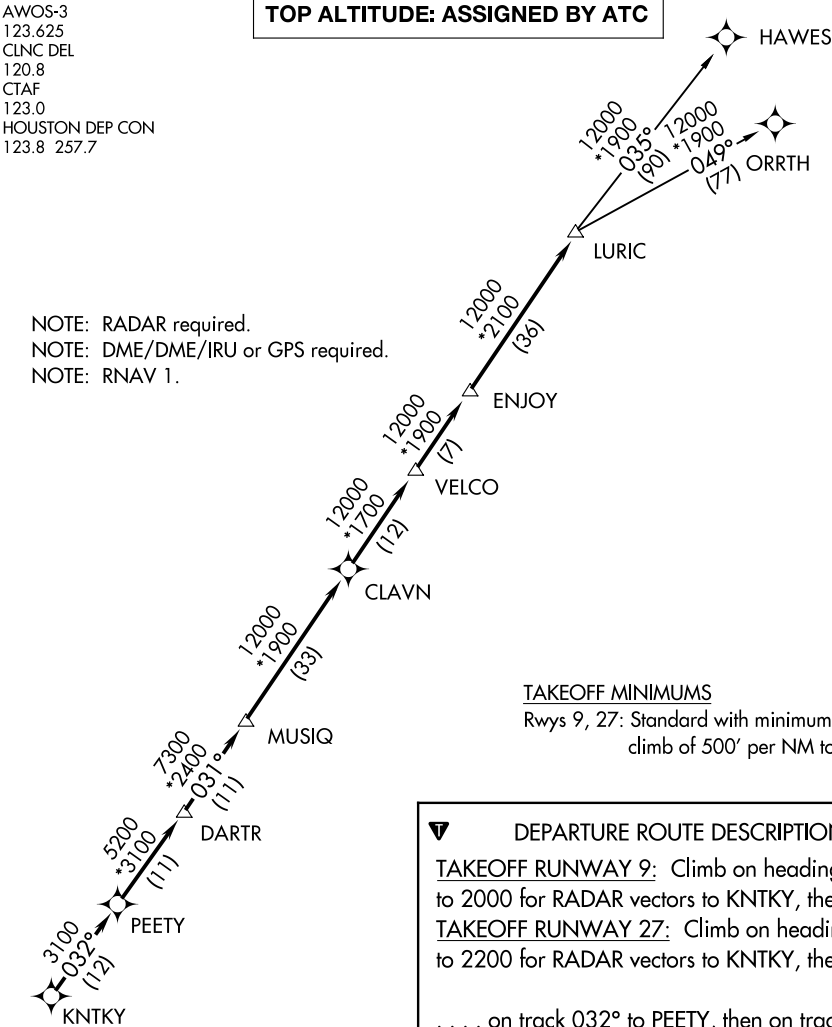


AWOS-3  
123.625  
CLNC DEL  
120.8  
CTAF  
123.0  
HOUSTON DEP CON  
123.8 257.7

TOP ALTITUDE: ASSIGNED BY ATC

NOTE: RADAR required.  
NOTE: DME/DME/IRU or GPS required.  
NOTE: RNAV 1.



TAKEOFF MINIMUMS  
Rwys 9, 27: Standard with minimum  
climb of 500' per NM to 580.

DEPARTURE ROUTE DESCRIPTION

TAKEOFF RUNWAY 9: Climb on heading 089°  
to 2000 for RADAR vectors to KNTKY, then . . .  
TAKEOFF RUNWAY 27: Climb on heading 269°  
to 2200 for RADAR vectors to KNTKY, then . . .

. . . on track 032° to PEETY, then on track 032°  
to DARTR, then on track 031° to MUSIQ, then on  
track 031° to CLAVN, then on track 031° to  
VELCO, then on track 031° to ENJOY, then on  
track 031° to LURIC, then on (transition).  
Maintain ATC assigned altitude. Expect filed  
altitude 10 minutes after departure.

HAWES TRANSITION (LURIC8.HAWES)  
ORRTH TRANSITION (LURIC8.ORRTH)

NOTE: Chart not to scale.