

WAAS CH <b>61310</b> <b>W27A</b>	APP CRS <b>273°</b>	Rwy Idg TDZE Apt Elev	<b>6502</b> <b>139</b> <b>147</b>
--	------------------------	-----------------------------	---

# RNAV (GPS) RWY 27

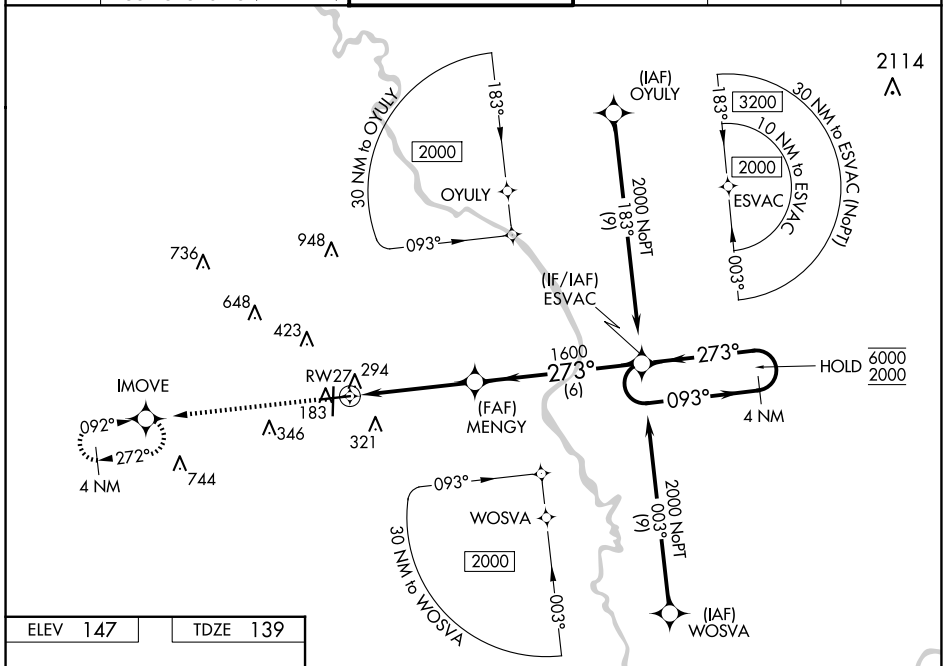
FLORENCE RGNL (FLO)

RNP APCH - GPS.

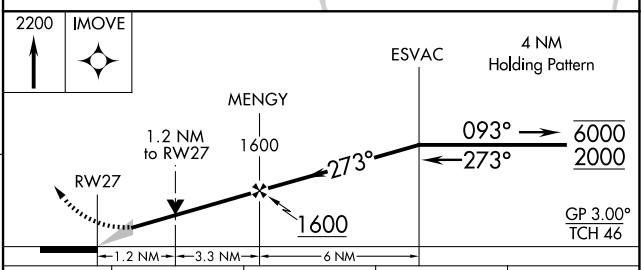
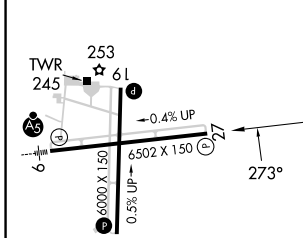
**⚠** Circling Rwy 1, 19 NA at night.  
For uncompensated Baro-VNAV systems, LNAV/VNAV NA below -7°C or above 54°C.

MISSED APPROACH: Climb to 2200 direct IMOVE and hold, continue climb-in-hold to 2200.

ATIS <b>123.625</b>	FLORENCE APP CON* <b>118.6 341.7</b> (256°-074°) <b>135.25 316.15</b> (075°-255°)	FLORENCE TOWER* <b>125.1</b> (CTAF) <b>353.85</b>	GND CON <b>121.9 353.85</b>	CLNC DEL <b>121.9 353.85</b>	UNICOM <b>122.95</b>
------------------------	---	--	--------------------------------	---------------------------------	-------------------------



ELEV <b>147</b>	TDZE <b>139</b>
-----------------	-----------------



CATEGORY	A	B	C	D
LPV DA		389-1	250 (300-1)	
LNAV/VNAV DA		465-1	326 (400-1)	
LNAV MDA	560-1	421 (500-1)	560-1¼	421 (500-1¼)
CIRCLING	640-1 493 (500-1)	660-1 513 (600-1)	900-2¼ 753 (800-2¼)	900-2½ 753 (800-2½)

FLORENCE, SOUTH CAROLINA  
Amdt 1A 30NOV23

34°11'N-79°43'W

# FLORENCE RGNL (FLO) RNAV (GPS) RWY 27

SE-2, 10 JUL 2025 to 07 AUG 2025

SE-2, 10 JUL 2025 to 07 AUG 2025