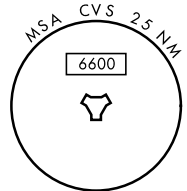
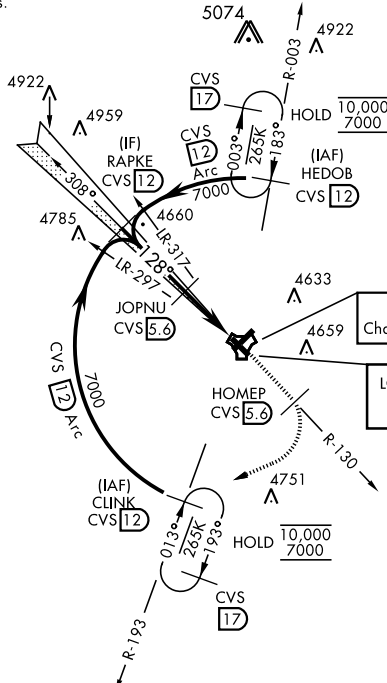


ILS or LOC RWY 13

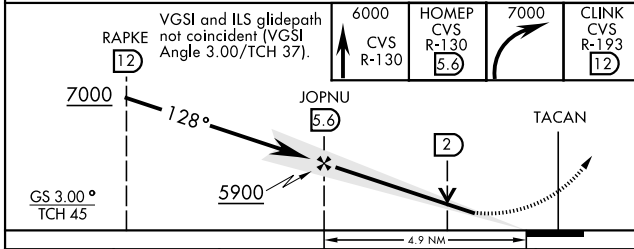
LOC I-OVI 110.35	APCH CRS 128°	Rwy ldg 8196 TDZE 4294 Arprt Elev 4295	AL-512 [USAF]	CANNON AFB (KCVS)
ATC RADAR or DME required.			SSALR 	† MISSED APPROACH: Climb to 6000 out CVS TACAN R-130 5.6 DME (HOMEP) then climbing right turn to 7000 intercept CVS R-193 to 12 DME (CLINK) and hold.
* When ALS inop, increase vis to ¾ mile.			A3	
ATIS 119.1 269.9	CANNON APP CON 118.425 352.1	CANNON TOWER 120.4 270.25	GND CON 121.9 275.8	CLNC DEL 120.2 293.225

** When ALS inop, increase CAT AB vis to 1 mile; CAT CDE vis to 1 3/8 miles.

† Missed approach requires use of RNAV or ATC radar monitoring.



EMERG SAFE ALT 100 NM 8000



ELEV 4295	TDZE 4294
128°	4433
4525	4437
4327	TWR 4437
A3	A1
A3	A3
A3	A3
HIRL all rwys	
FAF to MAP 4.9 NM	
Knots	60 90 120 150 180
Min:Sec	4:54 3:16 2:27 1:58 1:38

CLOVIS, NEW MEXICO 34° 23' N - 103° 19' W CANNON AFB (KCVS)

Amdt 4 30JAN20

ILS or LOC RWY 13

SW-1, 10 JUL 2025 to 07 AUG 2025

SW-1, 10 JUL 2025 to 07 AUG 2025