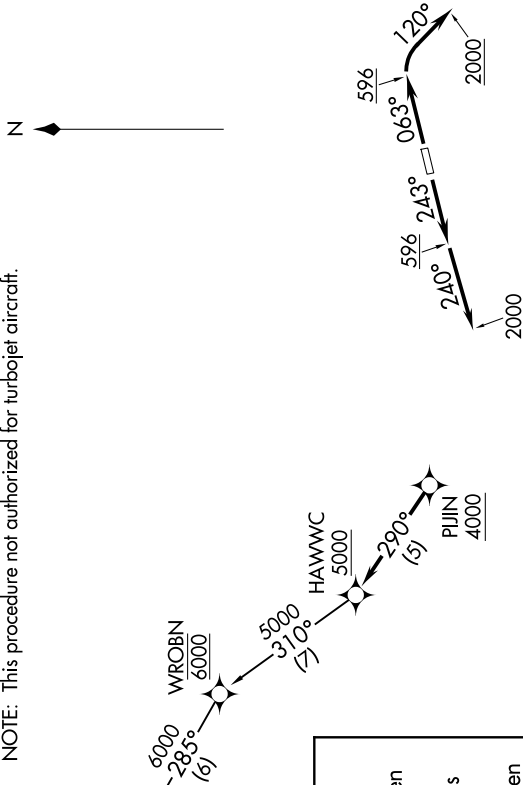


SW-3, 10 JUL 2025 to 07 AUG 2025

TOP ALTITUDE:
6000



NOTE: RADAR required.
NOTE: RNAV 1.
NOTE: DME/DME/IRU or GPS required.
NOTE: This procedure not authorized for turbojet aircraft.



ATIS 125.05
GND CON 121.8
SOCAL DEP CON 125.35 316.125

DEPARTURE ROUTE DESCRIPTION

TAKEOFF RUNWAY 6: Climb heading 063° to 596, then right turn on heading 120° to 2000 for vectors to PUJIN, cross PUJIN at or above 4000, then on track 290° to cross HAWWC at or above 5000, thence

TAKEOFF RUNWAY 24: Climb heading 243° to 596, then on heading 240° to 2000 for vectors to PUJIN, cross PUJIN at or above 4000, then on track 290° to cross HAWWC at or above 5000, thence

. . . . on (transition). Maintain 6000. Expect higher altitude 10 minutes after departure.

IKAYE TRANSITION (HAWWC3.IKAYE)

TAKEOFF MINIMUMS
Rwy 6: Standard with minimum climb of 280 feet per NM to 600.
Rwy 24: Standard.

NOTE: Chart not to scale.

SW-3, 10 JUL 2025 to 07 AUG 2025