

VORTAC TUS 116.0 Chan 107	APP CRS 123°	Rwy Idg 10996 TDZE 2599 Apt Elev 2643
-----------------------------------------------	------------------------	------------------------------------------------------------------

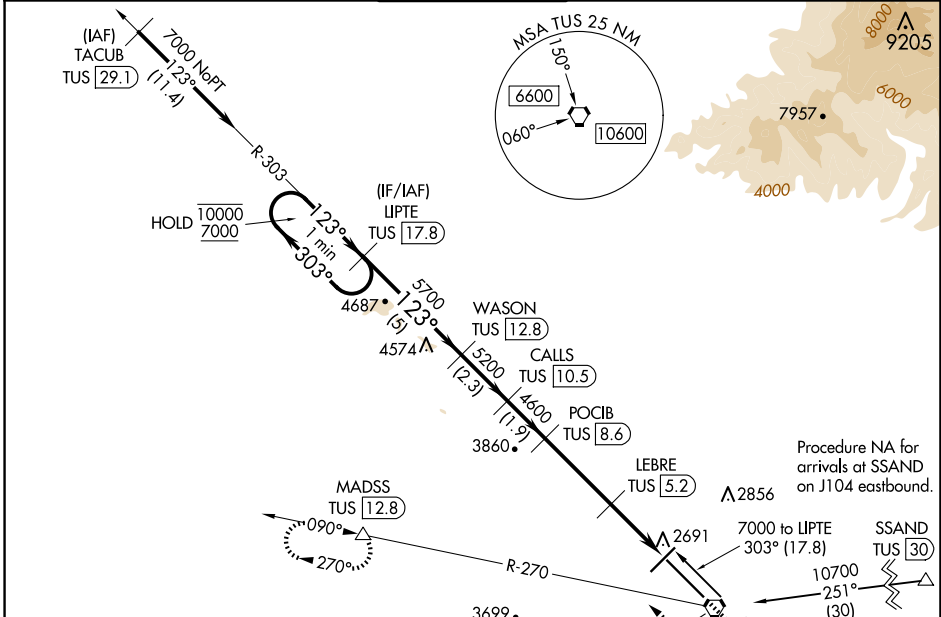
VOR or TACAN RWY 12

TUCSON INTL (TUS)

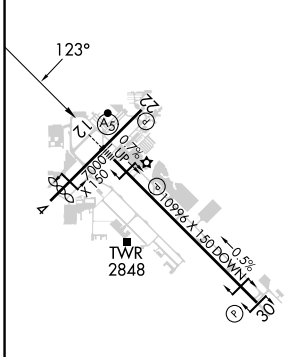
DME required. RADAR required for procedure entry at TACUB.
 For inop ALS, increase Cat E visibility to 1¼ SM.

MALS R
 MISSED APPROACH: Climb to 4000 then climbing right turn to 6000 on heading 300° and TUS VORTAC R-270 to MADSS/TUS 12.8 DME and hold, continue climb in hold to 6000.

ATIS 123.8 279.65	TUCSON APP CON 119.4 318.1	TUCSON TOWER 118.3 257.8	GND CON 120.025 348.6	CLNC DEL 126.65 326.2
-----------------------------	--------------------------------------	------------------------------------	---------------------------------	---------------------------------

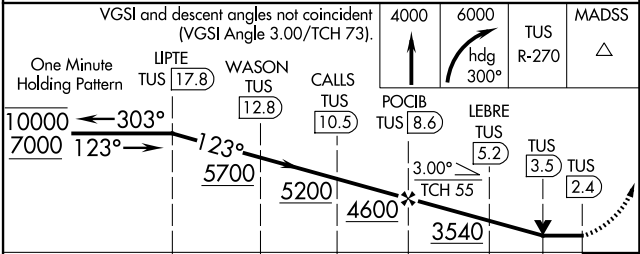


ELEV 2643	D	TDZE 2599
-----------	----------	-----------



HIRL Rwy 12-30
 MIRL Rwy 4-22
 REIL Rwy 22 and 30

Procedure NA for arrival on TUS VORTAC
 Procedure NA for arrivals at SSAND on J104 eastbound.



CATEGORY	A	B	C	D	E
S-12	3020/24	421 (400-½)	3020/40	421 (400-¾)	
CIRCLING	3160-1 517 (600-1)	3180-1 537 (600-1)	3200-1½ 557 (600-1½)	3660-3 1017(1100-3)	3920-3 1277(1300-3)

SW-4, 10 JUL 2025 to 07 AUG 2025

SW-4, 10 JUL 2025 to 07 AUG 2025